



Community-design center gets national funding

By ALF COLLINS

Funding for a community-design center program has been given the Environmental Works, Seattle, by the task force on social responsibility of the American Institute of

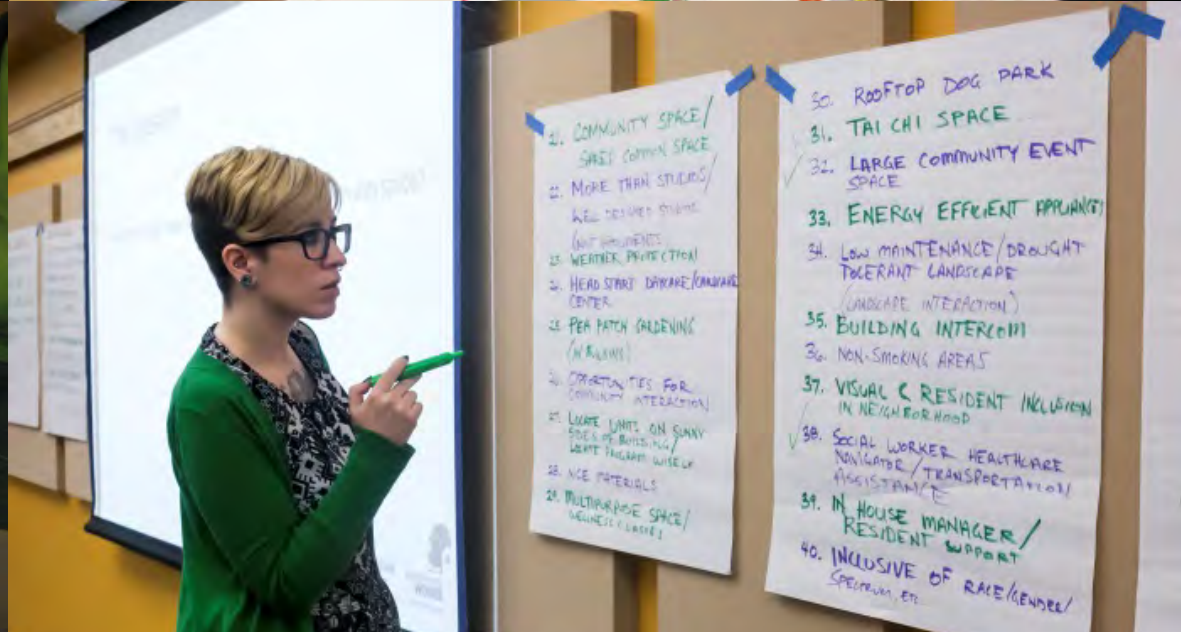
ronmental issues and working with groups.

A third function of the Works is to provide volunteer teams of environmental experts ranging from botanists to economists which would be



Environmental Works Community Design Center

NWUDC - AIA - Designing for Special Populations // July 24, 2018



Community Design Process - Unity Village

NWUDC - AIA - Designing for Special Populations // July 24, 2018

Housing For Special Populations

NWUDC - AIA - Designing for Special Populations

Seasonal Farmworker Housing

Special Needs

Permanent Supportive Housing

Tiny House Villages

Tribal Housing

Traumatic Brain Injury



Seasonal Farmworker Housing - Brender Creek

NWUDC - AIA - Designing for Special Populations // July 24, 2018



Special Needs - Foundation for the Challenged - Spokane Home

NWUDC - AIA - Designing for Special Populations // July 24, 2018



Permanent Supportive Housing - Caroline W Apartments

NWUDC - AIA - Designing for Special Populations // July 24, 2018



Tiny House Villages

NWUDC - AIA - Designing for Special Populations // July 24, 2018



Tribal Housing - Place of Hidden Waters

NWUDC - AIA - Designing for Special Populations // July 24, 2018



Traumatic Brain Injury - Terry Home

NWUDC - AIA - Designing for Special Populations // July 24, 2018



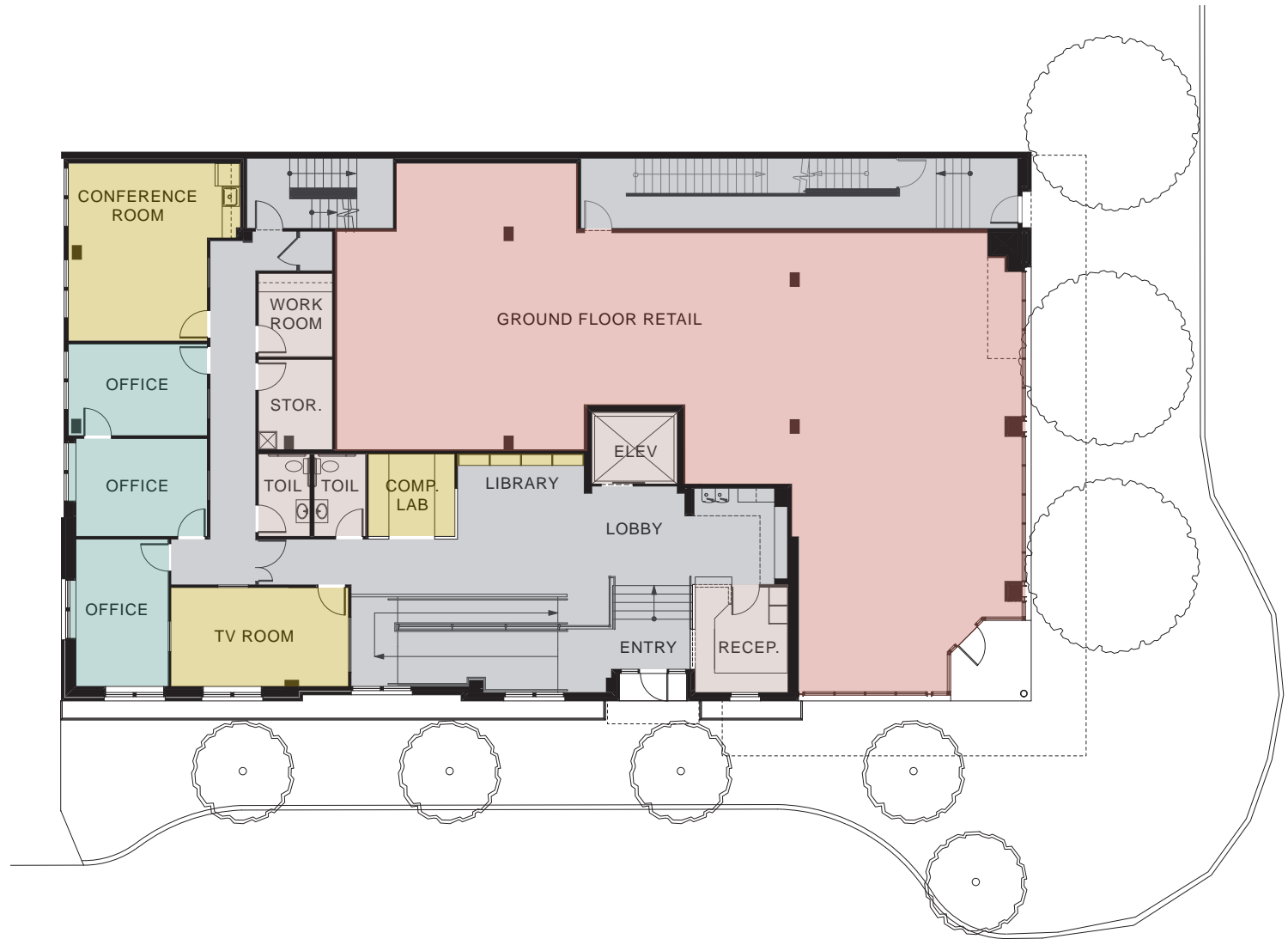
Project Case Study : Bakhita Gardens

Seattle, WA

NWUDC - AIA - Designing for Special Populations // July 24, 2018



- RESIDENTIAL UNITS
- COMMON AREAS
- SUPPORT SPACES
- CIRCULATION / STORAGE
- OFFICES
- RETAIL



Bakhita Gardens - First Floor Plan

NWUDC - AIA - Designing for Special Populations // July 24, 2018

- RESIDENTIAL UNITS
- COMMON AREAS
- SUPPORT SPACES
- CIRCULATION / STORAGE
- OFFICES



2nd Floor



3rd Floor

Bakhita Gardens - 2nd and 3rd Floor Plans



Bakhita Gardens, Seattle WA

NWUDC - AIA - Designing for Special Populations // July 24, 2018



Bakhita Gardens, Seattle WA

NWUDC - AIA - Designing for Special Populations // July 24, 2018



Bakhita Gardens, Seattle WA

NWUDC - AIA - Designing for Special Populations // July 24, 2018



Bakhita Gardens, Seattle WA

NWUDC - AIA - Designing for Special Populations // July 24, 2018



Bakhita Gardens, Seattle WA

NWUDC - AIA - Designing for Special Populations // July 24, 2018



Bakhita Gardens, Seattle WA

NWUDC - AIA - Designing for Special Populations // July 24, 2018



Bakhita Gardens, Seattle WA

NWUDC - AIA - Designing for Special Populations // July 24, 2018

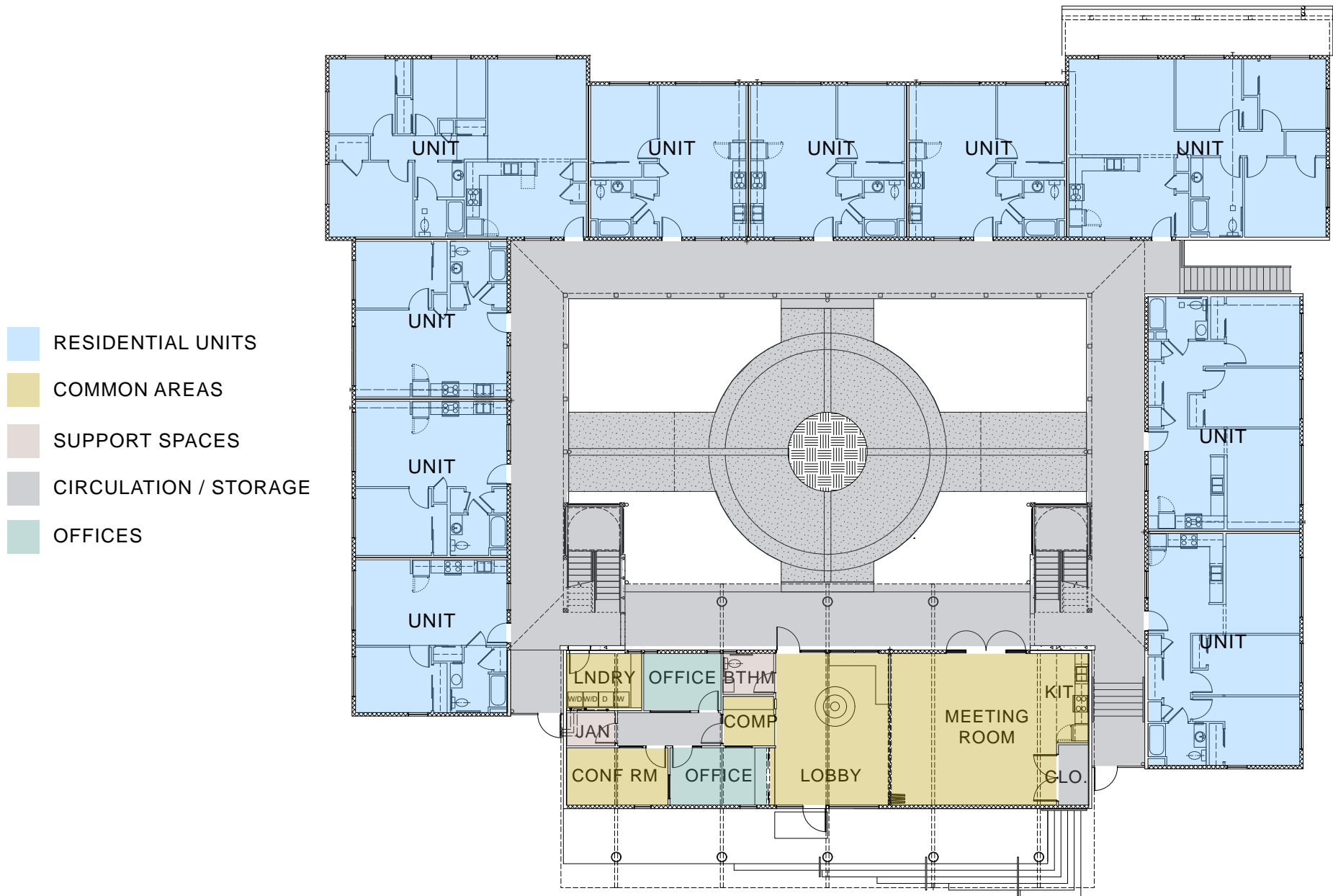


Project Case Study : Sail River Heights Apts

Neah Bay, WA

NWUDC - AIA - Designing for Special Populations // July 24, 2018





Sail River Heights - Site Plan

NWUDC - AIA - Designing for Special Populations // July 24, 2018



Sail River Heights Longhouse - Community Design Meeting

NWUDC - AIA - Designing for Special Populations // July 24, 2018



Sail River Heights Longhouse, Neah Bay WA

NWUDC - AIA - Designing for Special Populations // July 24, 2018



Sail River Heights Longhouse, Neah Bay WA

NWUDC - AIA - Designing for Special Populations // July 24, 2018



Sail River Heights Longhouse, Neah Bay WA

NWUDC - AIA - Designing for Special Populations // July 24, 2018



Sail River Heights Longhouse, Neah Bay WA

NWUDC - AIA - Designing for Special Populations // July 24, 2018



Sail River Heights Longhouse, Neah Bay WA

NWUDC - AIA - Designing for Special Populations // July 24, 2018



Sail River Heights Longhouse, Neah Bay WA

NWUDC - AIA - Designing for Special Populations // July 24, 2018



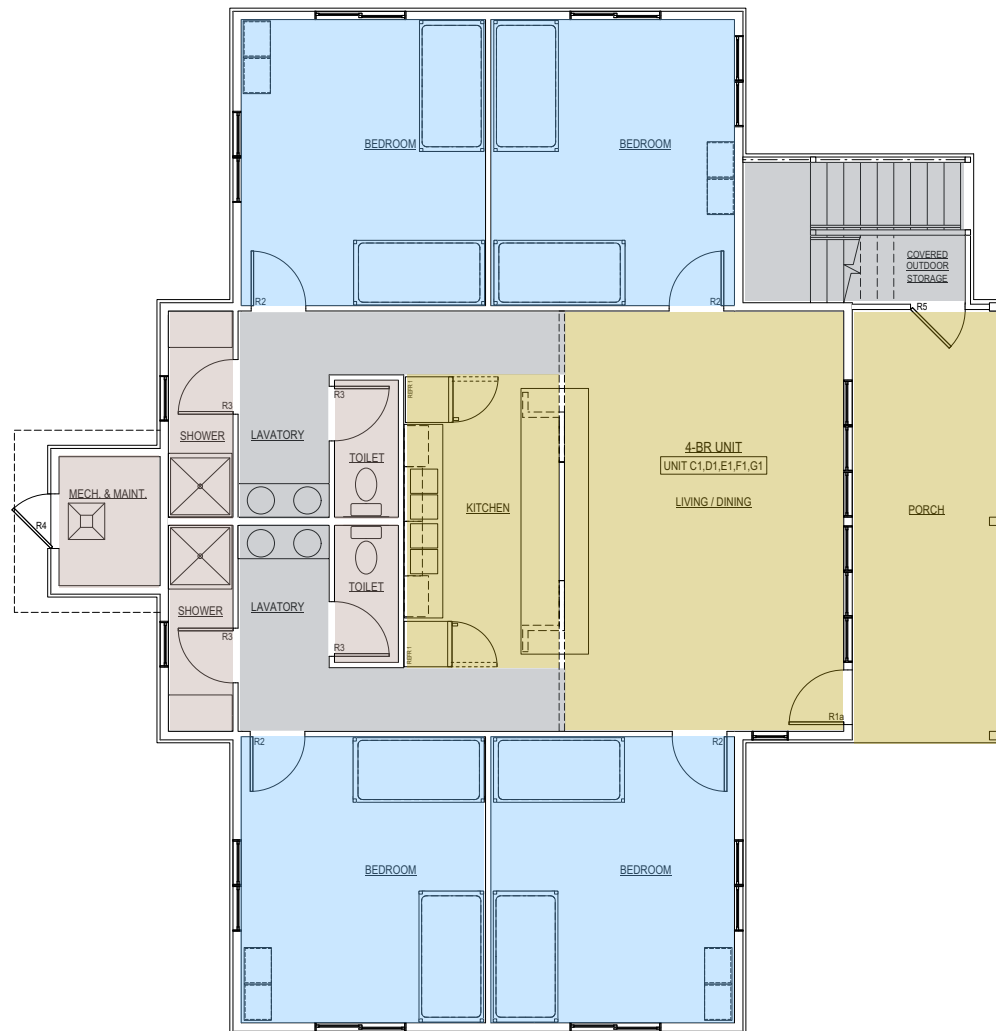
Project Case Study : Brender Creek

Cashmere, WA

NWUDC - AIA - Designing for Special Populations // July 24, 2018



- UNITS
- COMMON AREAS
- SUPPORT SPACES
- CIRCULATION / STORAGE



Brender Creek - First Floor Plan



Brender Creek, Cashmere WA

NWUDC - AIA - Designing for Special Populations // July 24, 2018



Brender Creek, Cashmere WA

NWUDC - AIA - Designing for Special Populations // July 24, 2018



Brender Creek, Cashmere WA

NWUDC - AIA - Designing for Special Populations // July 24, 2018



Brender Creek, Cashmere WA

NWUDC - AIA - Designing for Special Populations // July 24, 2018



Brender Creek, Cashmere WA

NWUDC - AIA - Designing for Special Populations // July 24, 2018



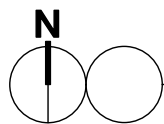
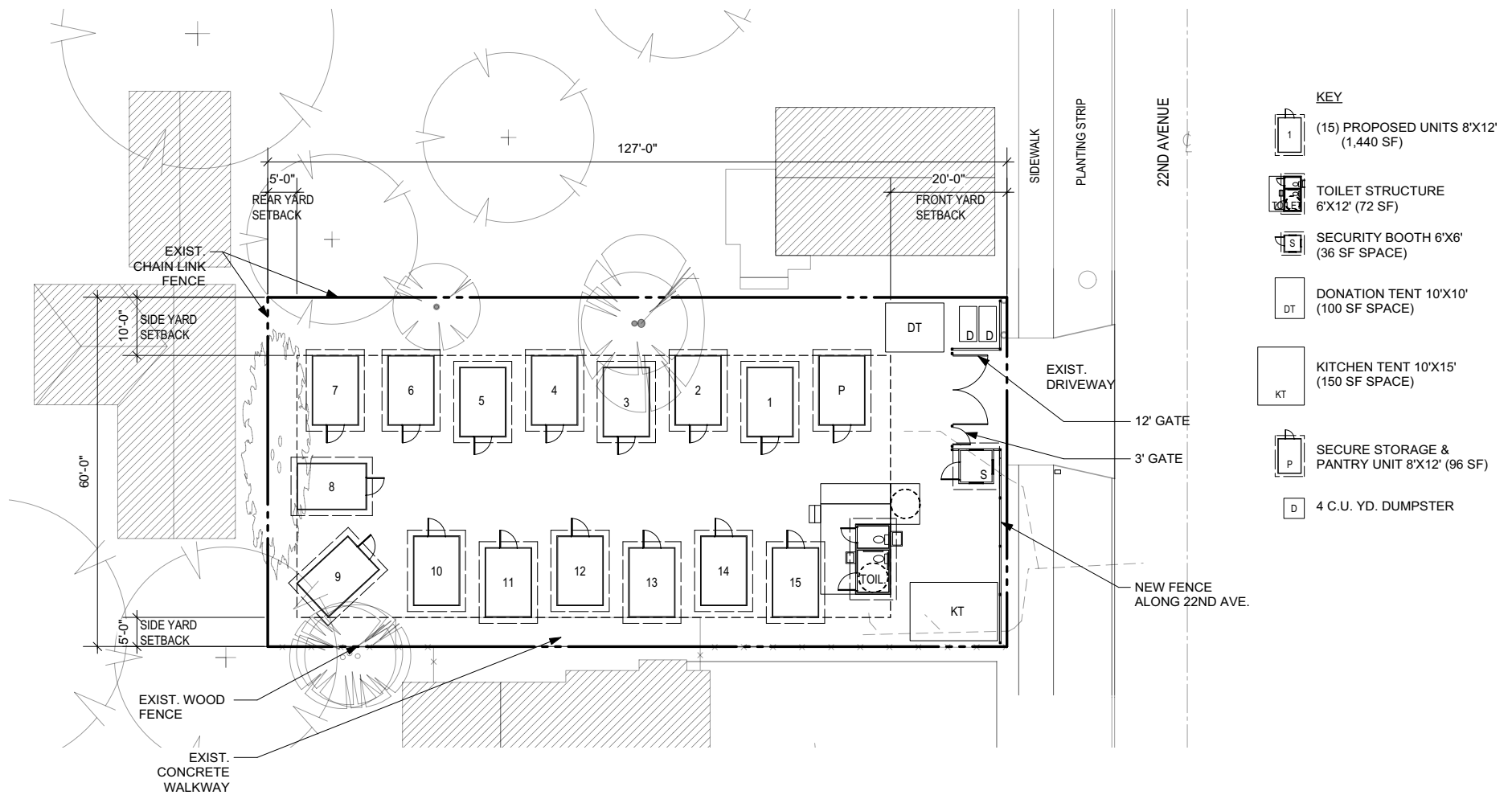
Brender Creek, Cashmere WA

NWUDC - AIA - Designing for Special Populations // July 24, 2018



Brender Creek, Cashmere WA

NWUDC - AIA - Designing for Special Populations // July 24, 2018

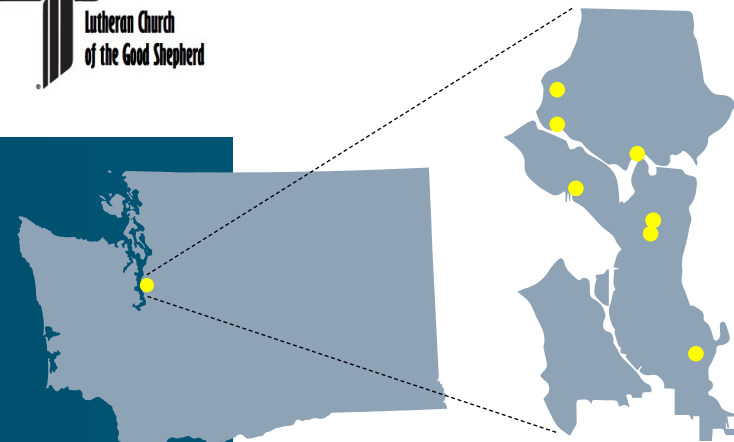


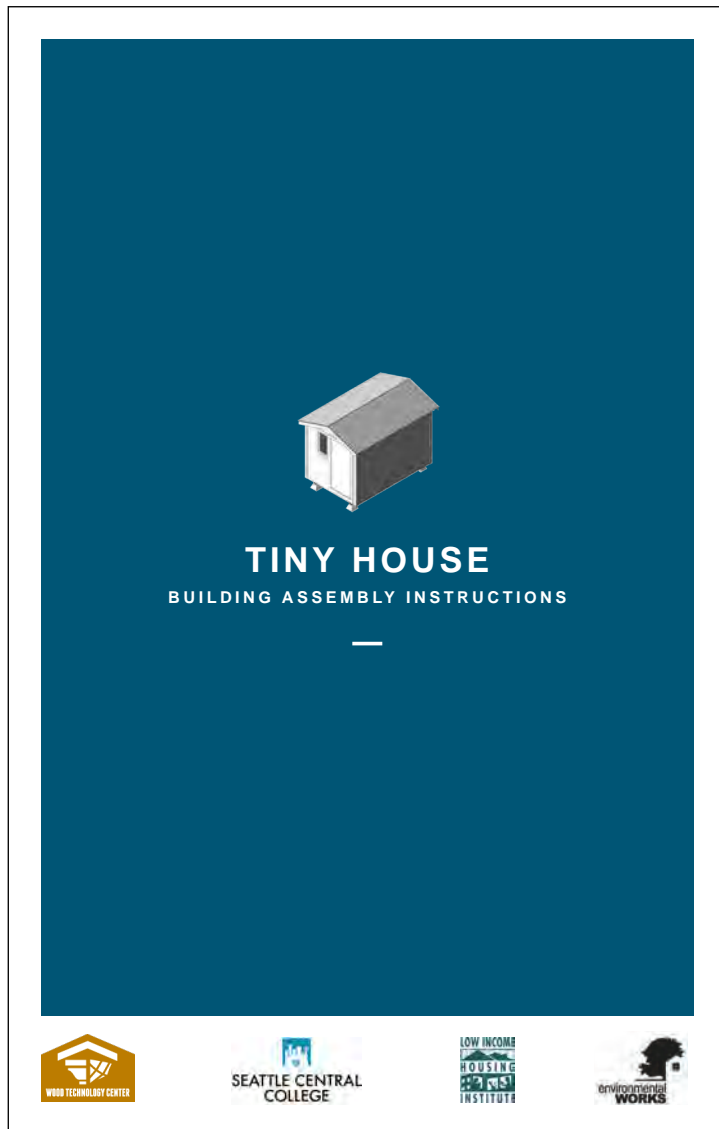
Site Plan
Scale: 1/16" = 1'-0"

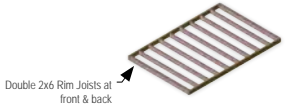
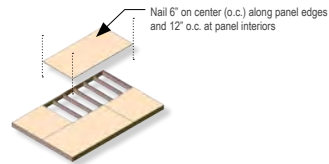
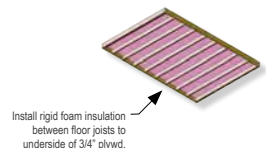
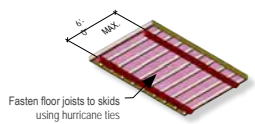


Project Case Study : Tiny House Villages

Multiple Locations, Seattle, WA





| | |
|--|---|
| <p>STEP 01 Materials: 2x6 Floor Joists - 16d Framing Nails</p>  <p>Double 2x6 Rim Joists at front & back</p> <hr/> <p>STEP 02 Materials: T&G 3/4" Plywood; 16d Framing Nails</p>  <p>Nail 6" on center (o.c.) along panel edges and 12" o.c. at panel interiors</p> <p>FLOORING NOTES: 1. Check work by walking floor; Look for missing and improperly installed fasteners; Adjust as needed 2. Nails should be driven into the joists and sink securely into joist and subfloor</p> | <p>STEP 03 Materials: 1" Rigid Foam Insulation</p>  <p>Install rigid foam insulation between floor joists to underside of 3/4" plywd.</p> <hr/> <p>STEP 04 Materials: 4x4 Pressure Treated Beam; Hurricane Ties - Hot Galvanized 1-1/4" Nails</p>  <p>Fasten floor joists to skids using hurricane ties</p> |
|--|---|



Tiny House Village, Othello Village

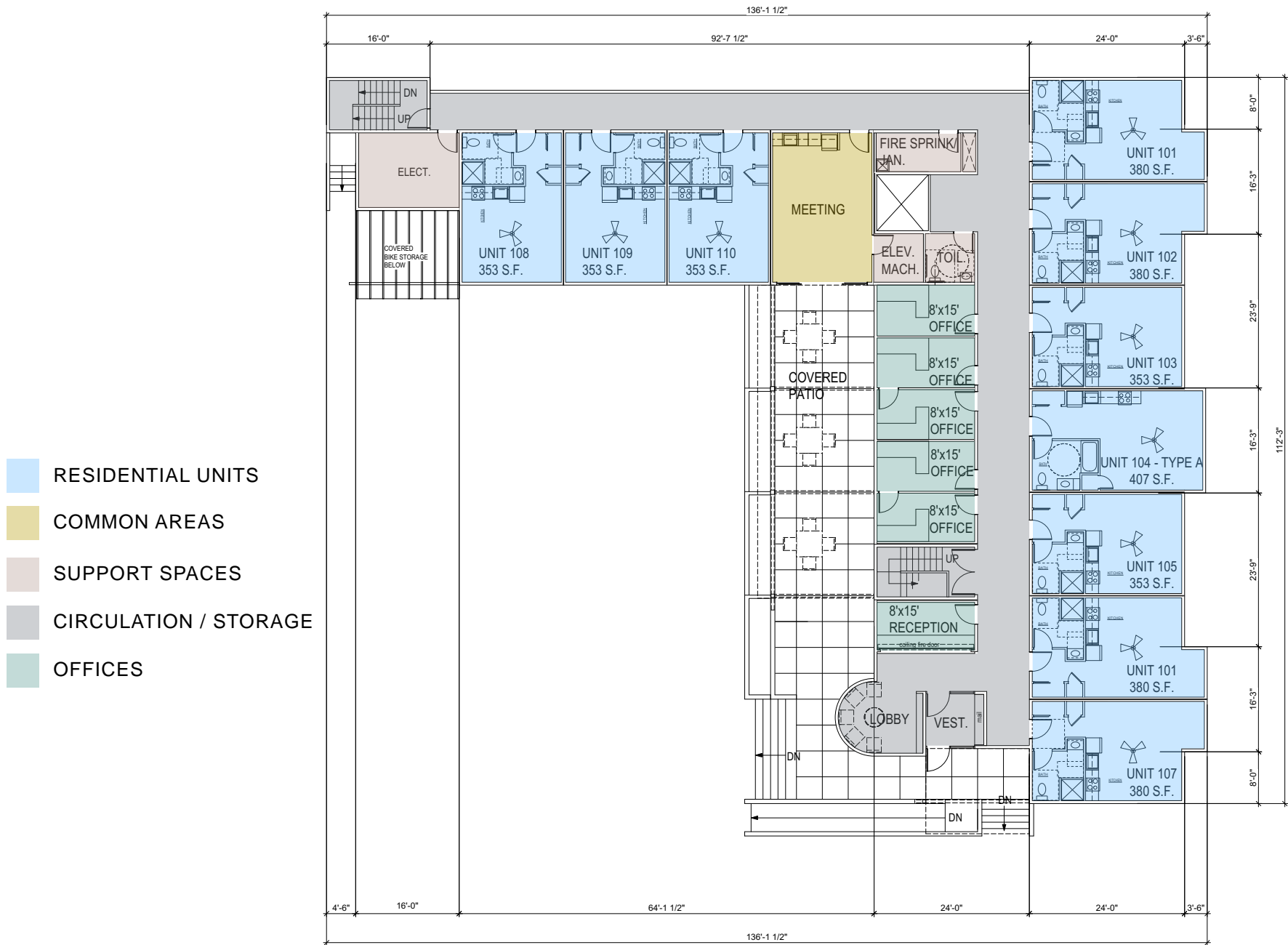
NWUDC - AIA - Designing for Special Populations // July 24, 2018



Project Case Study : Drexel House Veterans Housing Olympia, WA

NWUDC - AIA - Designing for Special Populations // July 24, 2018





Drexel House Veterans Housing - First Floor Plan



Drexel House Veterans Housing - Community Design Meeting

NWUDC - AIA - Designing for Special Populations // July 24, 2018



Drexel House Veterans Housing, Olympia WA

NWUDC - AIA - Designing for Special Populations // July 24, 2018



Drexel House Veterans Housing, Olympia WA

NWUDC - AIA - Designing for Special Populations // July 24, 2018



Drexel House Veterans Housing, Olympia WA

NWUDC - AIA - Designing for Special Populations // July 24, 2018



Drexel House Veterans Housing, Olympia WA

NWUDC - AIA - Designing for Special Populations // July 24, 2018



Drexel House Veterans Housing, Olympia WA

NWUDC - AIA - Designing for Special Populations // July 24, 2018



Drexel House Veterans Housing, Olympia WA

NWUDC - AIA - Designing for Special Populations // July 24, 2018



Drexel House Veterans Housing, Olympia WA

NWUDC - AIA - Designing for Special Populations // July 24, 2018



Drexel House Veterans Housing, Olympia WA

NWUDC - AIA - Designing for Special Populations // July 24, 2018

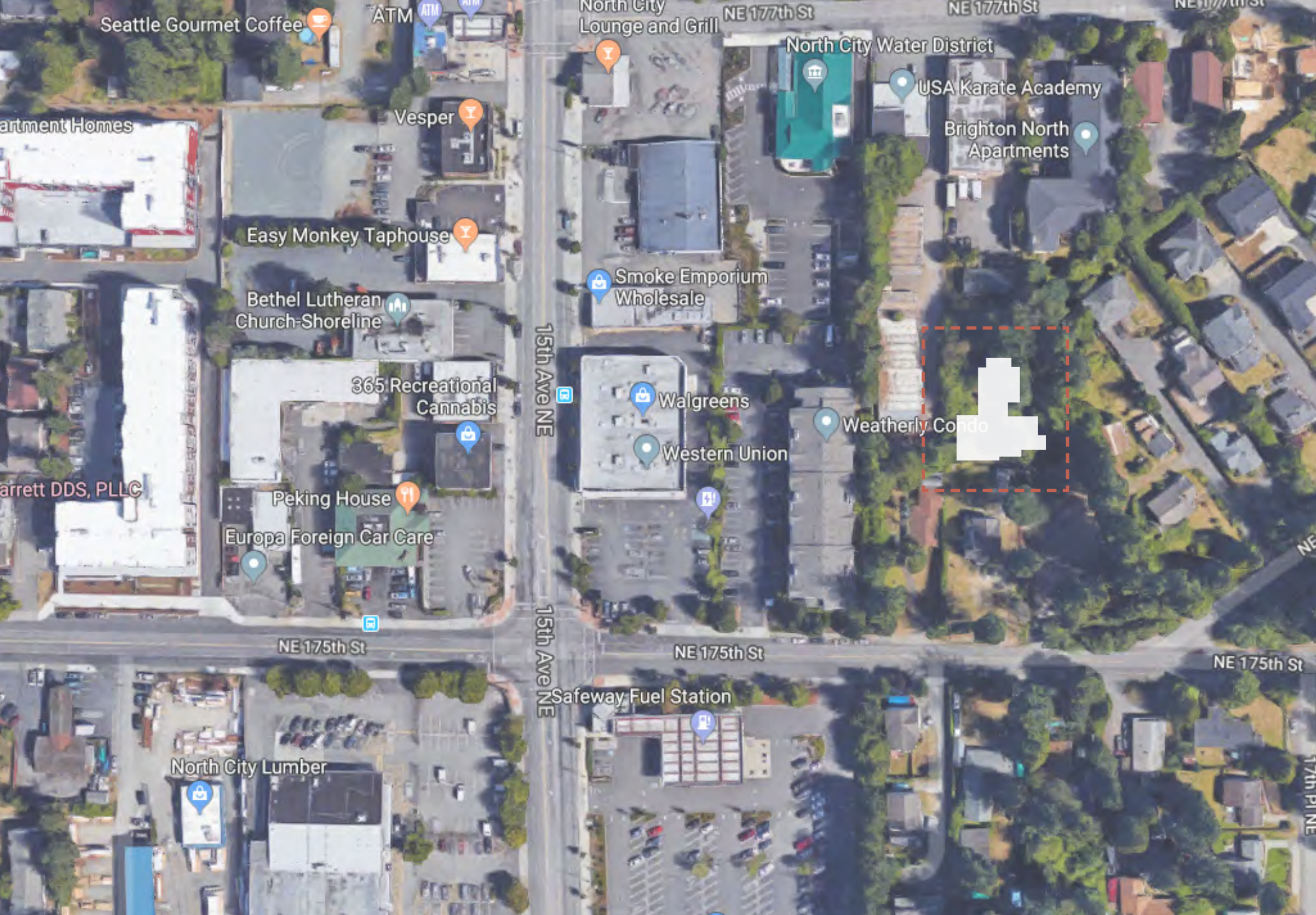


PROVAIL

COMMUNITY LIVING FOR PEOPLE WITH TRAUMATIC BRAIN INJURIES

12 Bed boarding home with common amenities // 5,000 Square Feet
3 million dollar project

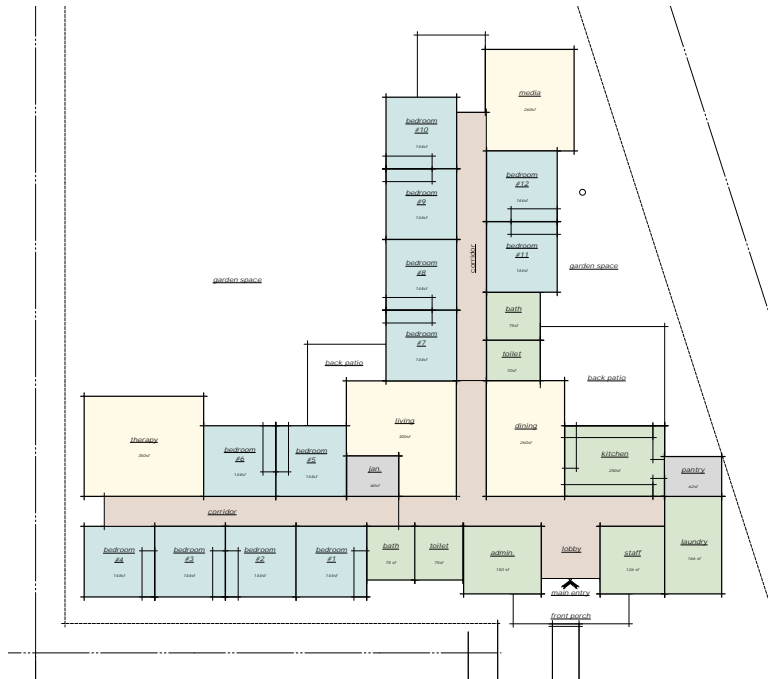
FUNDERS: Washington State Department of Commerce Housing Trust Fund, the King County Housing and Community Development Program, the Federal Home Loan Bank of Des Moines Affordable Housing Program and the Washington State Legislature



Provail Brainspace TBI Home - Aerial View

NWUDC - AIA - Designing for Special Populations // July 24, 2018

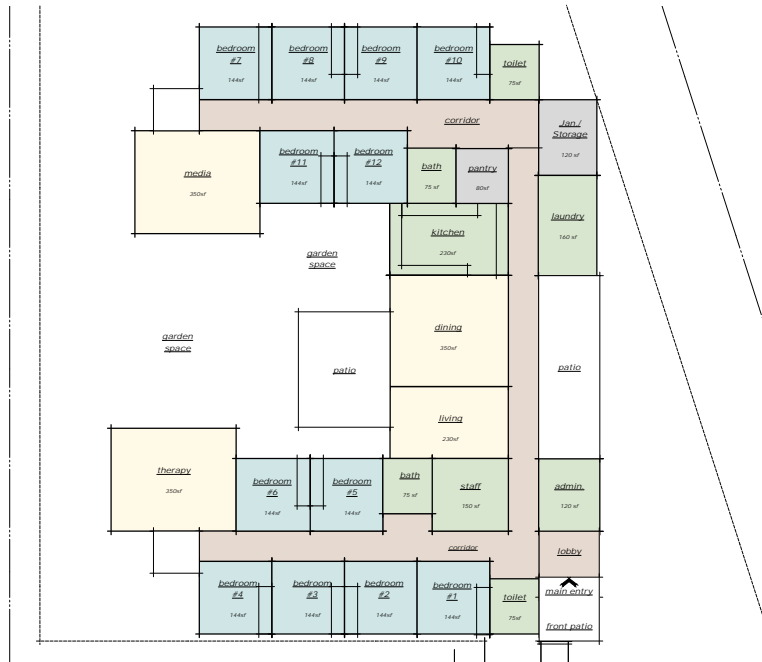
OPTION A



OPTION B



OPTION C



Provail Brainspace TBI Home - Options A, B, and C



Provail Brainspace TBI Home - Floor Plan



OPEN KITCHEN



HOME LIKE ENVIRONMENT



OUTDOOR SPACE

- CLUSTERED BEDROOM WINGS
- DURABLE
- VARIETY OF COMMON SPACE



COMFORTABLE



ENTRY PORCH



PRONOUNCED ENTRY



INTIMATE SPACES

Provail Brainspace TBI Home - Vision Board

NWUDC - AIA - Designing for Special Populations // July 24, 2018



Provail Brainspace TBI Home

NWUDC - AIA - Designing for Special Populations // July 24, 2018



Provail Brainspace TBI Home

NWUDC - AIA - Designing for Special Populations // July 24, 2018



Provail Brainspace TBI Home

NWUDC - AIA - Designing for Special Populations // July 24, 2018



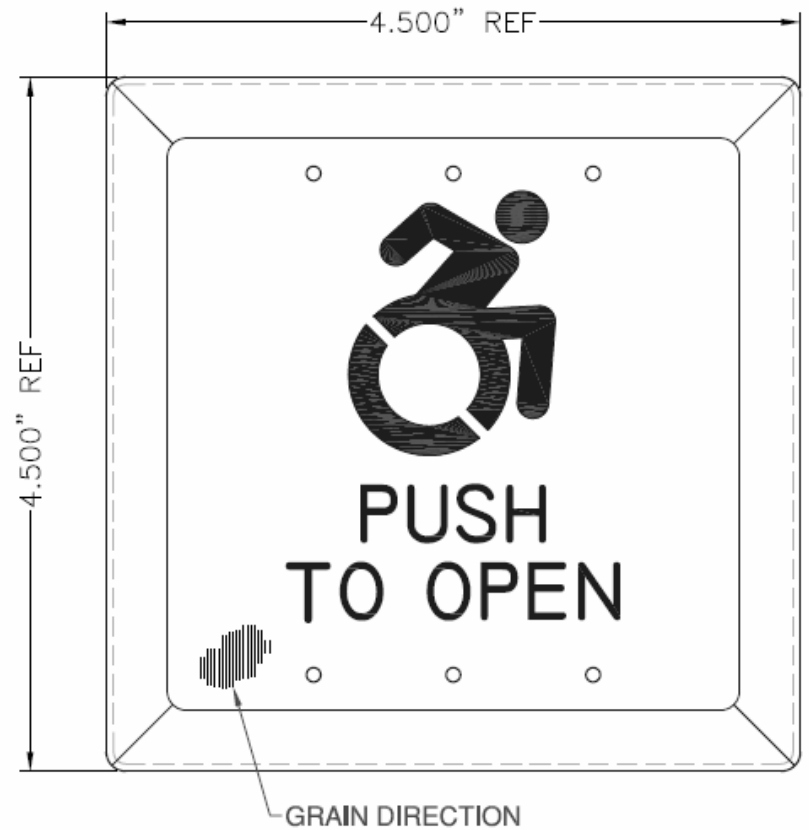
Provail Brainspace TBI Home

NWUDC - AIA - Designing for Special Populations // July 24, 2018



Provail Brainspace TBI Home

NWUDC - AIA - Designing for Special Populations // July 24, 2018



Provail Brainspace TBI Home

NWUDC - AIA - Designing for Special Populations // July 24, 2018



Provail Brainspace TBI Home

NWUDC - AIA - Designing for Special Populations // July 24, 2018



Provail Brainspace TBI Home

NWUDC - AIA - Designing for Special Populations // July 24, 2018

On The Boards

NWUDC - AIA - Designing for Special Populations

23rd and Jackson

Everett Safe Streets Supportive Housing

Kirkland Shelter

WGL Mattawa Farmworker Housing



Work in Progress - 23rd and Jackson

NWUDC - AIA - Designing for Special Populations // July 24, 2018



Work in Progress - Everett Safe Streets Supportive Housing

NWUDC - AIA - Designing for Special Populations // July 24, 2018



Work in Progress - Kirkland Shelter

NWUDC - AIA - Designing for Special Populations // July 24, 2018

NE-80th-St.



Work in Progress - Kirkland Shelter

NWUDC - AIA - Designing for Special Populations // July 24, 2018



Work in Progress - WGL Mattawa Farmworker Housing

NWUDC - AIA - Designing for Special Populations // July 24, 2018



Work in Progress - WGL Mattawa Farmworker Housing

NWUDC - AIA - Designing for Special Populations // July 24, 2018



People and Places *Matter*

